

**HP-SEE User Forum 2012, Belgrade**

**LinkSCEEM-2: Development of an HPC  
ecoSystem in the Eastern Mediterranean**

Jens Wiegand

Scientific Coordinator for CaSToRC Research



THE CYPRUS  
INSTITUTE

CaSToRC

# Content

- **The Cyprus Institute – Who we are**
- **HPC at The Cyprus Institute**
- **LinkSCEEM – building the community**
- **Summary**

# Content

- **The Cyprus Institute – Who we are**
- **HPC at The Cyprus Institute**
- **LinkSCEEM – building the community**
- **Summary**

# The Cyprus Institute



An international research establishment, partnered with leading Institutions in the world, pursuing regional problems of global significance in the areas of:

- **Computation – Based Science and Technology – High Performance Computing**
- **Energy, Environment/Climate and Water**
- **Science and Technology in Archaeology & Culture**



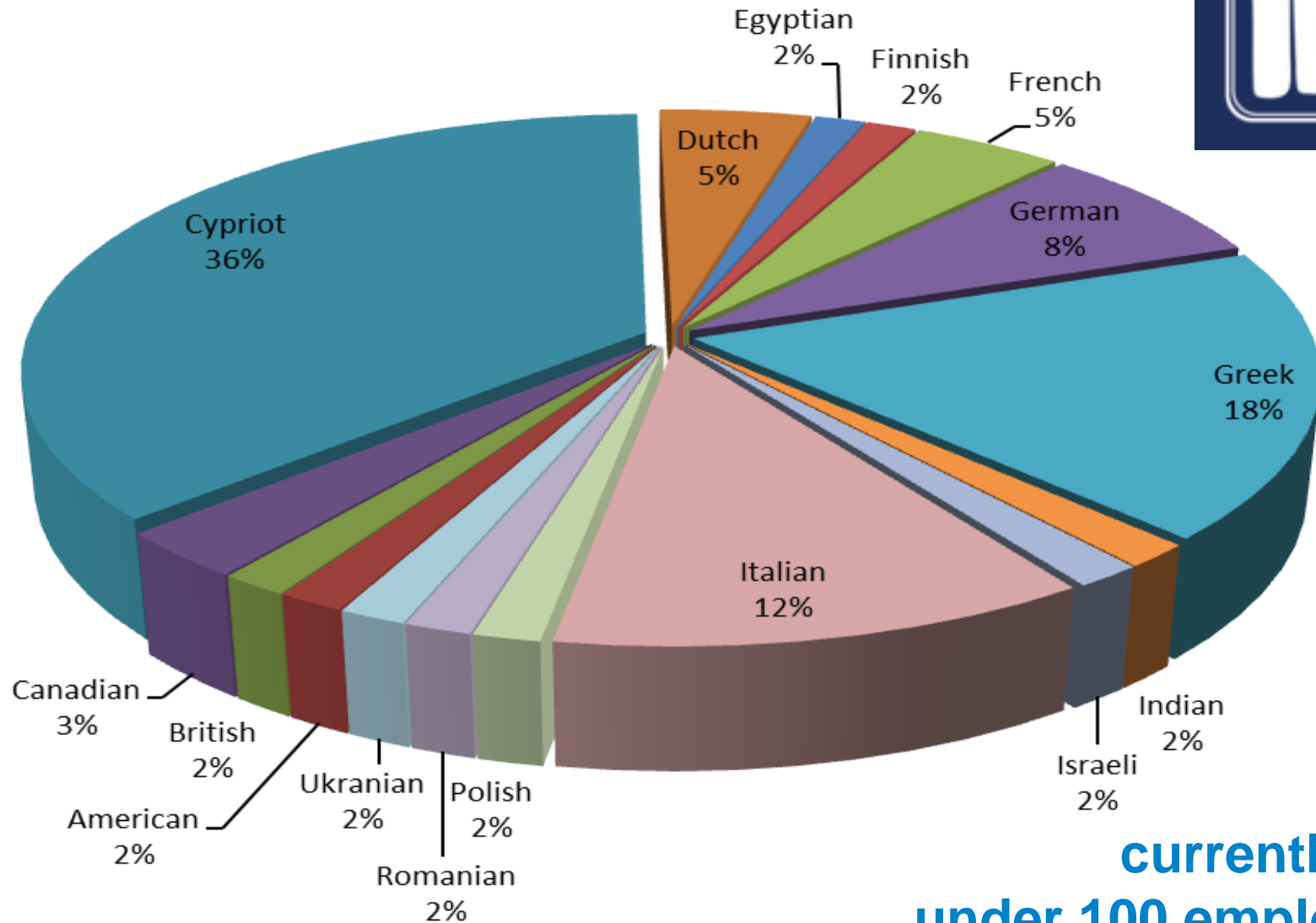
# The Cyprus Institute



# The Cyprus Institute



# Nationality - Research staff

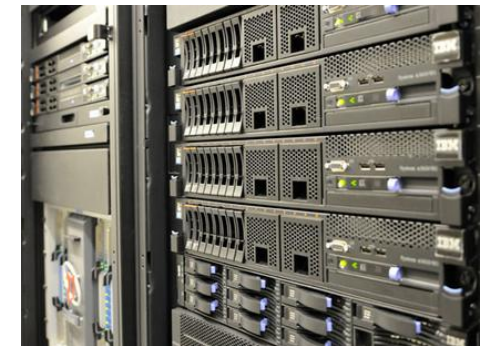


currently just  
under 100 employees

# The Cyprus Institute



- **Energy, Environment and Water Research Center (EEWRC) – opened in 2007**
- **Science and Technology in Archaeology Research Center (STARC) – opened in 2009**
- **Computation-based Science and Technology Research Center (CaSToRC) – opened in 2009**





# The Cyprus Institute



## STRATEGIC PARTNERSHIPS:

- Centre de Recherche et de Restauration des Musées de France (C2RMF)
- Massachusetts Institute of Technology (MIT)
- Max Planck Society
- NCSA and University of Illinois at Urbana-Champaign (UIUC)
- University of California, Davis



# Content

- **The Cyprus Institute – Who we are**
- **HPC at The Cyprus Institute**
- **LinkSCEEM – building the community**
- **Summary**

# Computation-based Science and Technology Research Center (CaSToRC)

- To create a research program in computational science, engineering and underlying areas of scientific computing
- Development of and education in computation-based science and technology in Cyprus and the Eastern Mediterranean region
- To provide adequate computing resources to enable Cyprus and the Eastern Mediterranean research community to pursue forefront computing-related research
- To support the research missions of the other Cyl Research Centers

# Cy-Tera HPC facility

- **Cy-Tera (116 nodes: 98 CPU nodes, 18 GPU nodes)**
  - Hybrid CPU/GPU Linux Cluster Theoretical Peak Performance (TPP)  
30.5Tflops
- **Euclid (6 GPU nodes)**
- **Prometheus (8 GPU nodes)**
- **Planck (24 CPU nodes)**



# Cy-Tera Strategic Infrastructure Project

- **A new research unit to host a HPC infrastructure**
  - Create infrastructure to host a HPC unit
  - Procure HPC hardware and establish operations for such system
  - Initiate research on the system
- **RPF funded project**
  - The Project Cy-Tera (NEA ΥΠΟΔΟΜΗ/ΣΤΡΑΤΗ/0308/31) is co-financed by the European Regional Development Fund and the Republic of Cyprus through the Research Promotion Foundation



ΚΥΠΡΙΑΚΗ ΔΗΜΟΚΡΑΤΙΑ



# Content

- **The Cyprus Institute – Who we are**
- **HPC at The Cyprus Institute**
- **LinkSCEEM – building the community**
- **Summary**

# Development of a HPC ecoSystem in Cyprus and the Eastern Mediterranean



HPC infrastructure



HPC user



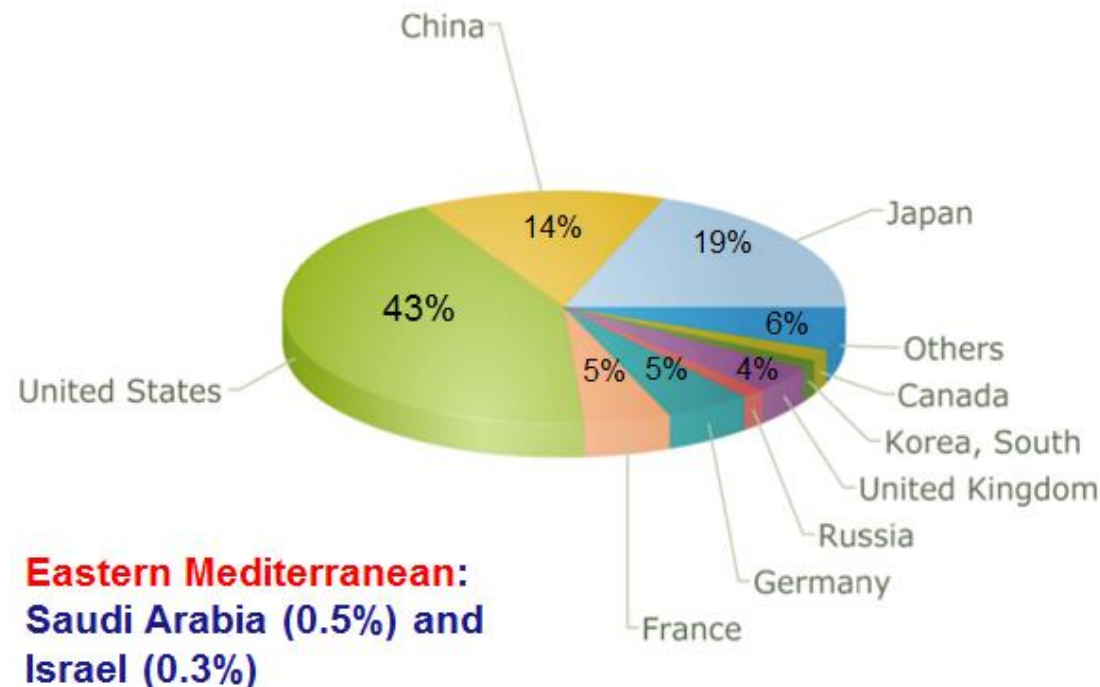
HPC user community

 LINKSCEEM

# LinkSCEEM-1 Assessment stage

- **LinkSCEEM-1 project run from 2008-2009**
  - assessment of HPC resources and users in the Eastern Mediterranean
  - lack HPC resources
  - lack of connectivity

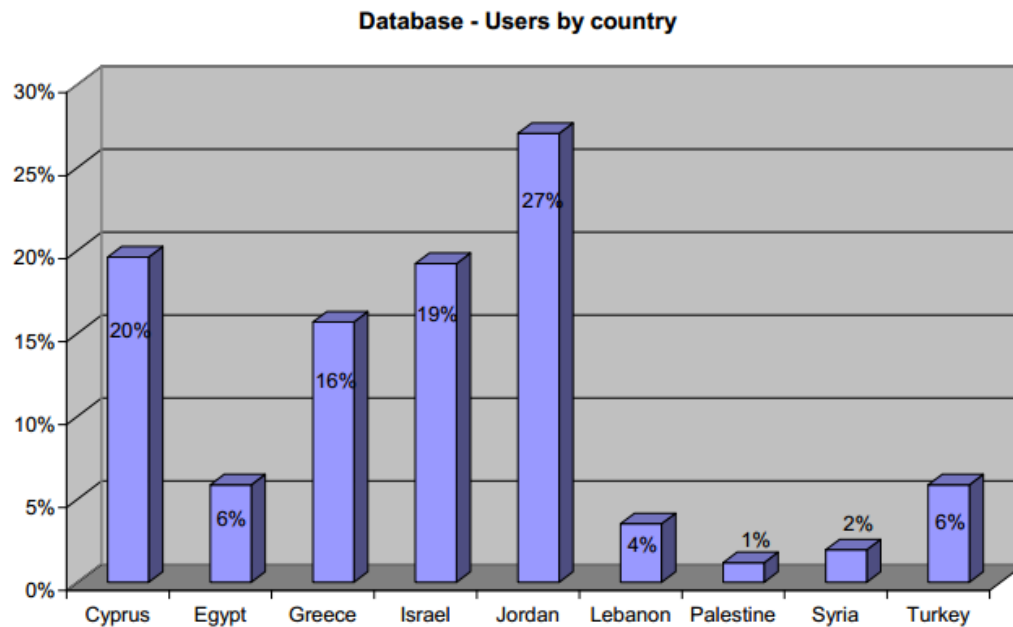
countries by HPC resources  
(status Nov 2011)





# LinkSCEEM-1 Assessment stage

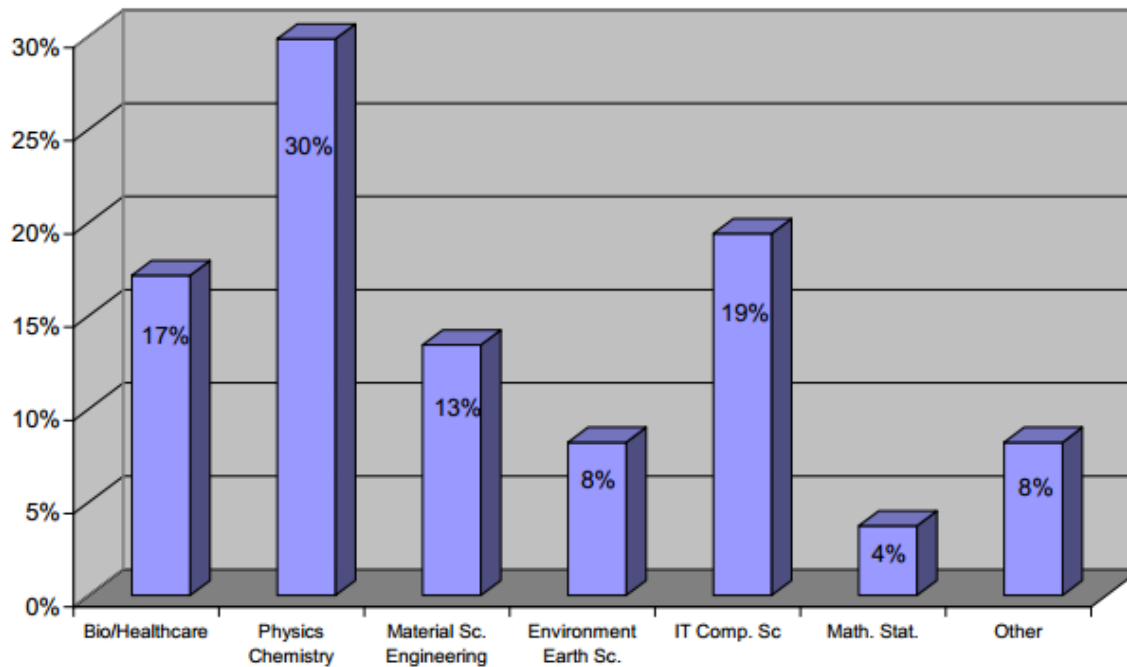
- **LinkSCEEM-1 project run from 2008-2009**
  - there are users in the region



CaSToRC database 2009  
(347 contacts)

# LinkSCEEM-1 Assessment stage

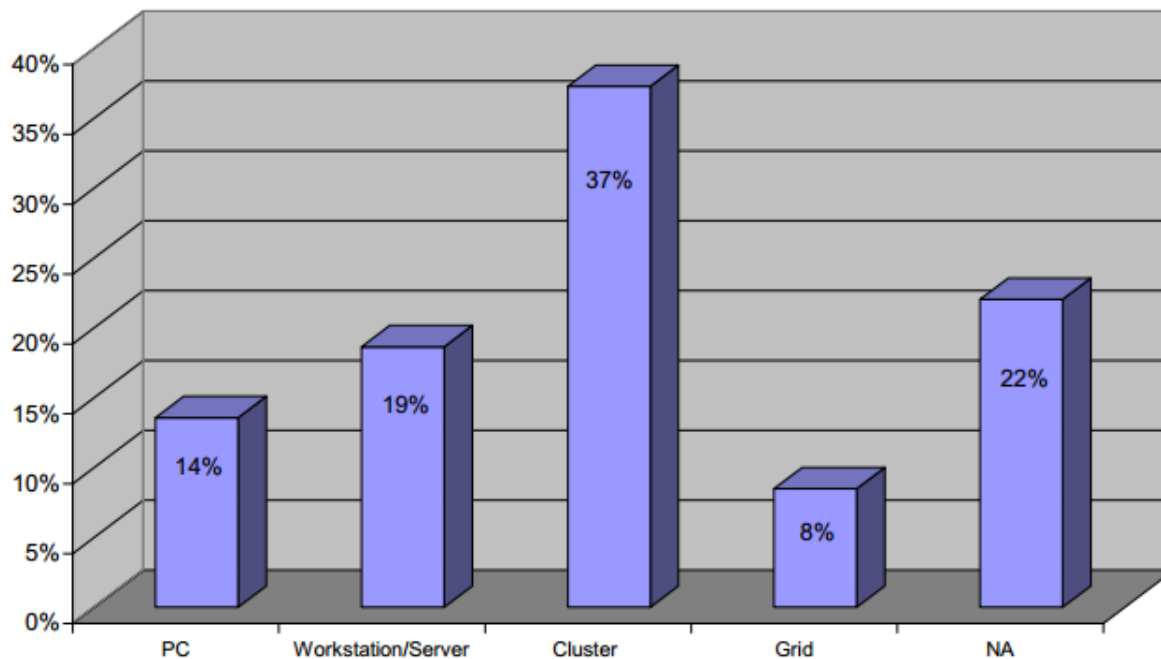
- **LinkSCEEM-1 project run from 2008-2009**
  - there are users in the region



CaSToRC database 2009  
(347 contacts)

# LinkSCEEM-1 Assessment stage

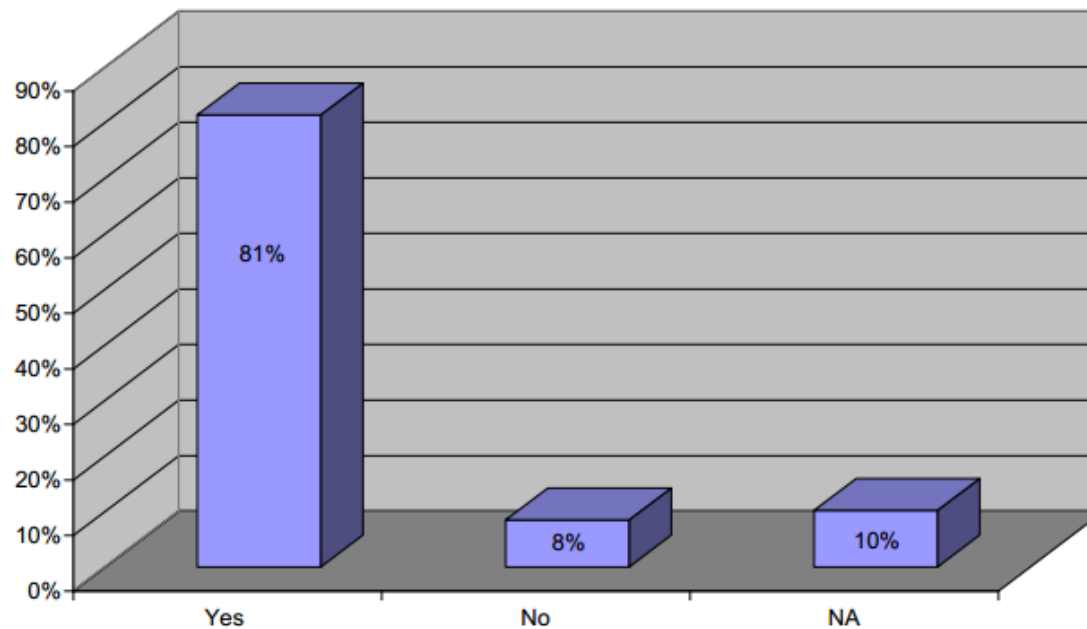
- **LinkSCEEM-1 project run from 2008-2009**
  - there are users in the region



Available resources  
(LinkSCEEM-1 survey 59  
participants)

# LinkSCEEM-1 Assessment stage

- **LinkSCEEM-1 project run from 2008-2009**
  - there are users in the region



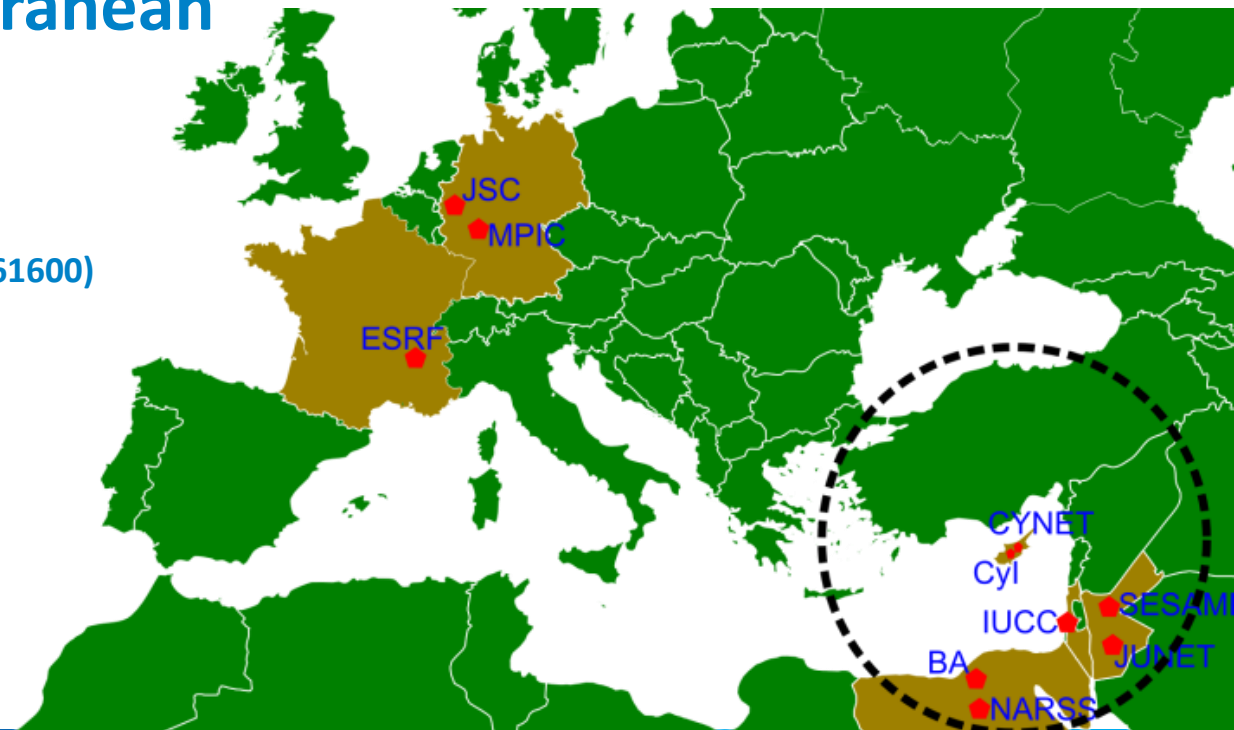
Need for additional resources  
(LinkSCEEM-1 survey 59  
participants)

# LinkSCEEM-1 Assessment stage

- **The assessment of the region highlighted here are users in the region, but**
  - more HPC resources needed
  - more raining needed
  - collaboration in the region needs to intensify

# Establish a HPC EcoSystem in the Eastern Mediterranean – LinkSCEEM-2

- Enlarging the European Research Area
- Enabling science in the Eastern Mediterranean
- EU-funded FP7 project  
(under grant agreement no RI-261600)



# Project consortium

- Regional research institutions and international centres of excellence in high performance computing (HPC)



# Project objectives

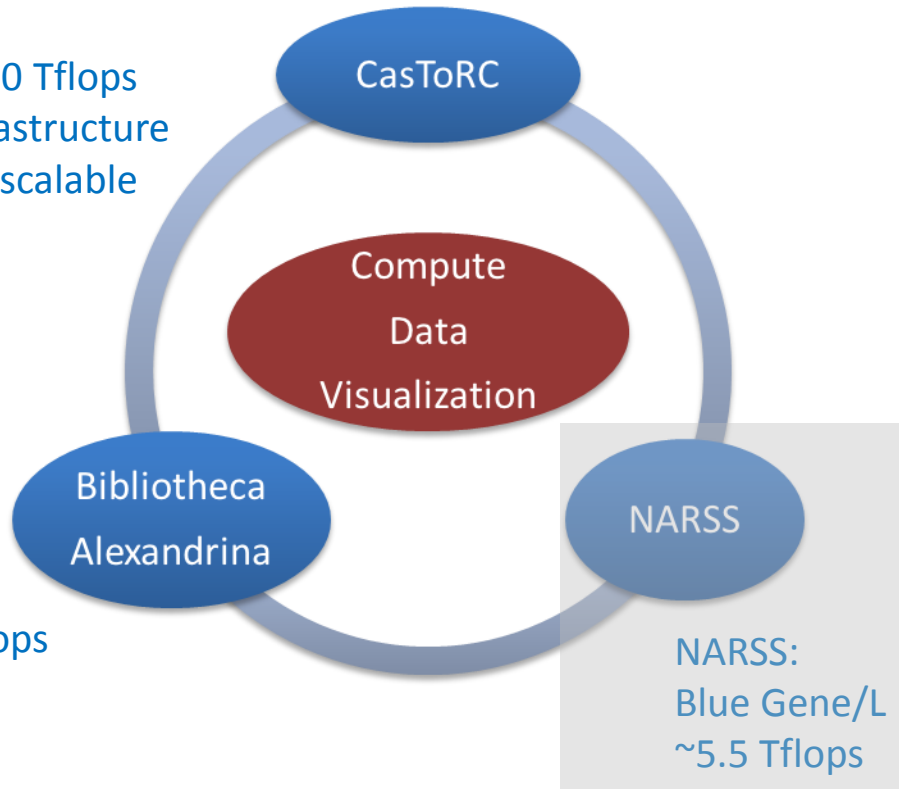
- Integrate regional computational resources
- Create user support and training programs
- Enable research of particular relevance to the region (Climate, Cultural heritage, Synchrotron)
- Contribute to the upgrade of the regional network connectivity
- Build strong links to the European Research Area in accord with the European Neighbourhood Policy



# HPC facilities within LinkSCEEM

## CaSToRC

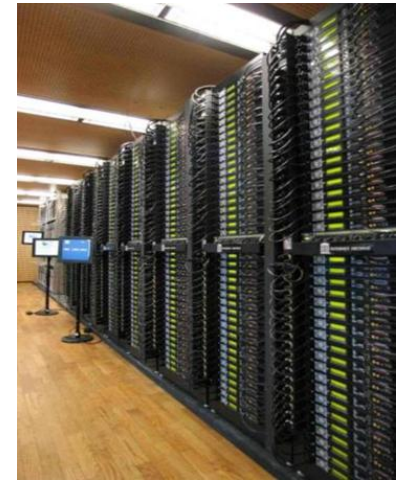
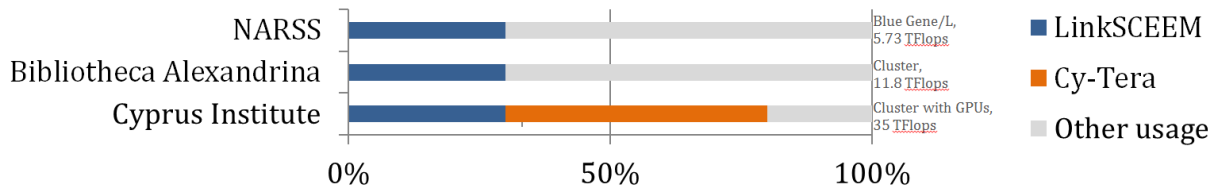
- Cy-Tera machine, ~30 Tflops
- 3D visualization infrastructure
- Data storage 300TB scalable to 1PB



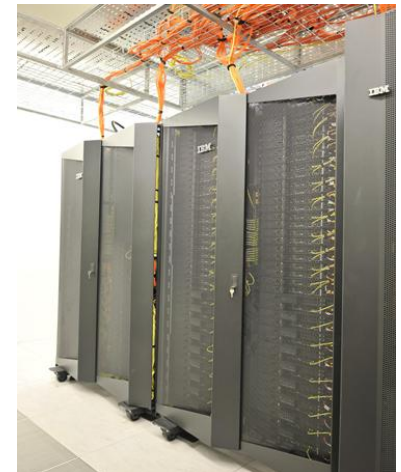
## Bibliotheca Alexandria:

- SUNcluster of ~12 Tflops
- Storage of 1.6 PB

NARSS:  
Blue Gene/L  
~5.5 Tflops



The BA archive system of 43 racks



The Cy-Tera machine at CaSToRC

# HPC facilities within LinkSCEEM

- Implemented HPC Baseline Configuration across sites

- Users should have a consistent documented environment across HPC sites
- Technical personnel maintain systems according to certain policies

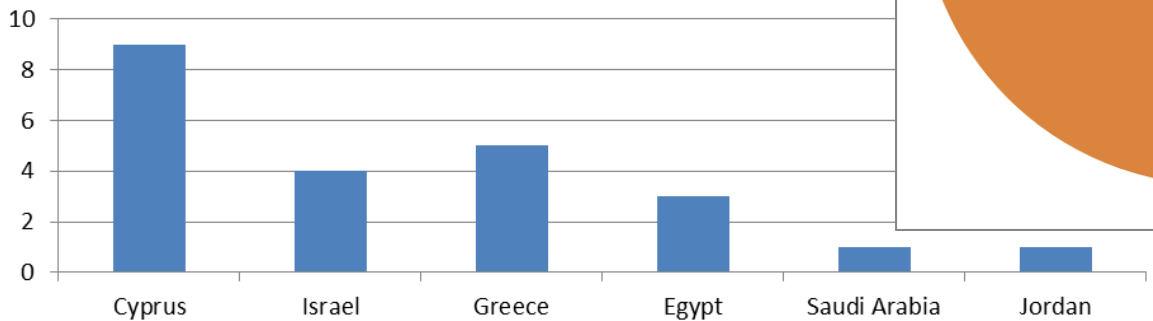
- Joint calls of participating HPC centres

Policy tag #	Policy Topics	Participating Shared Resource Centers are BA, Cyl, NARSS		
		BA	Cyl	NARSS
LS2_05-01	Multiple-Version Software	✓	✓	👍
LS2_05-05	Queue Names	✓	✓	
LS2_05-06	Login Shells	✓	✓	👍
LS2_06-01	Open Source Math Libraries	✓	👍	👍
LS2_06-04	Editors and Scripting Tools	✓	✓	👍
LS2_06-05	Set of Debuggers	✓	✓	
LS2_06-15	Sample Code Repository	✓	✓	👍
LS2_06-17	Multiple-Version Software Access via Modules	✓	✓	👍
LS2_06-19	Open Source Utilities	✓	✓	👍
LS2_07-02	Open Source Performance and Profiling Tools	✓	✓	👍
LS2_07-03	Common Set of Open Source Compilers	✓	✓	👍
LS2_10-01	New/Returning User Welcome Letter	✓	✓	👍
LS2_10-02	Common Open Source High Productivity Languages	👍	👍	👍
LS2_11-99	GPU Productivity Environment	N/A	👍	N/A
LS2_11-98	Common Set of Environment Variables	✓	✓	
LS2_11-97	Climate Science Productivity Environment		👍	
LS2_11-96	Common Set of Commercial Compilers	✓	✓	
LS2_11-95	Molecular Dynamics Productivity Environment		👍	

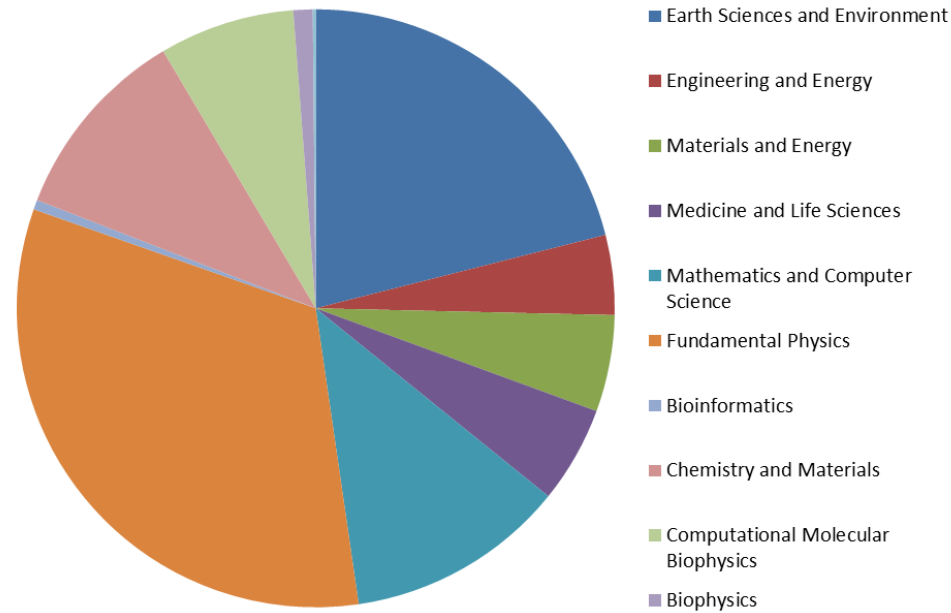
# HPC facilities within LinkSCEEM

- First LinkSCEEM production access since May 2012

Number of submissions by country



Distribution of CPU resources by field



# User Support and Training

## ■ User support/training

- User support services (helpdesk)
- Online services (website, training portal)

## ■ 9 annual training events

- Four 1-day user meetings
- One 3-day general user meeting
- One 3-day advanced cross-sectional workshop
- Three 3-day thematic workshops

**LINKSCEEM**

**Main Menu**

- Home
- About Us
- News
- Partners
- HPC Resource Centres

**Activities**

- Events
- Outreach
- Work Organization

**User Resources**

- User Support
- Call for Proposals
- Access & Allocations
- Trainings
- Links

**Users Support**

**Introduction**

Cy-Tera and the EU-funded LinkSCEEM projects allow researchers from Cyprus and the Eastern Mediterranean region to apply for time on high-end high-performance computers via a peer review process. The projects provide user support to assist prospective users in using the HPC systems available and a training portal for introducing users to material necessary for preparing applications for such systems. Information on requesting user support and accessing the training material, as well as on the process for access & allocations of compute resources can be found below.

**Primary User Support**

User support is provided via an online helpdesk system. The helpdesk service is provided at: [helpdesk@cyi.ac.cy](mailto:helpdesk@cyi.ac.cy)

**Allocations and Access**

To request access to the available HPC sites visit: <http://www.linksceem.eu/hpcaccess>

**Training Portal**

Training material is currently available via the training portal ATutor and spans the following topics:

- Getting Started on LinkSCEEM HPC Resources
- Parallel Computing Explained
- Introduction to MPI

**Login Form**

Username  
Password  
Remember Me   
Login  
Forgot your password?  
Forgot your username?

**e-infrastructure**

**7**  
CAPS/ITES

User support webpage

# User Support and Training

- **Extensive online documentation for users**
  - welcome packs
  - information on software, queuing etc.
- **Training portal (<http://linksceem.eu/ATutor>)**
  - online training courses in topics relevant to HPC

## Course



### [1.1 Parallel Computing Explained](#)

Category: Parallel Computing



### [2.1 Introduction to MPI](#)

Category: HPC Programming



### [2.2 Introduction to OpenMP](#)

Category: HPC Programming



### [2.3 Debugging Serial and Parallel Codes](#)

Category: HPC Programming



### [2.4 Multilevel Parallel Programming](#)

Category: HPC Programming



### [2.5 Intermediate MPI](#)

Category: HPC Programming



### [3.1 Parallel Numerical Libraries](#)

Category: HPC Applications and Libraries



### [4.1 Introduction to Performance Tools](#)

Category: HPC Performance Tuning



### [4.2 Performance Tuning for Clusters](#)

Category: HPC Performance Tuning



### [4.3 Introduction to Multi-core Performance](#)

Category: HPC Performance Tuning



### [5.1 Introduction to Visualization](#)

Category: Data and Scientific Visualisation

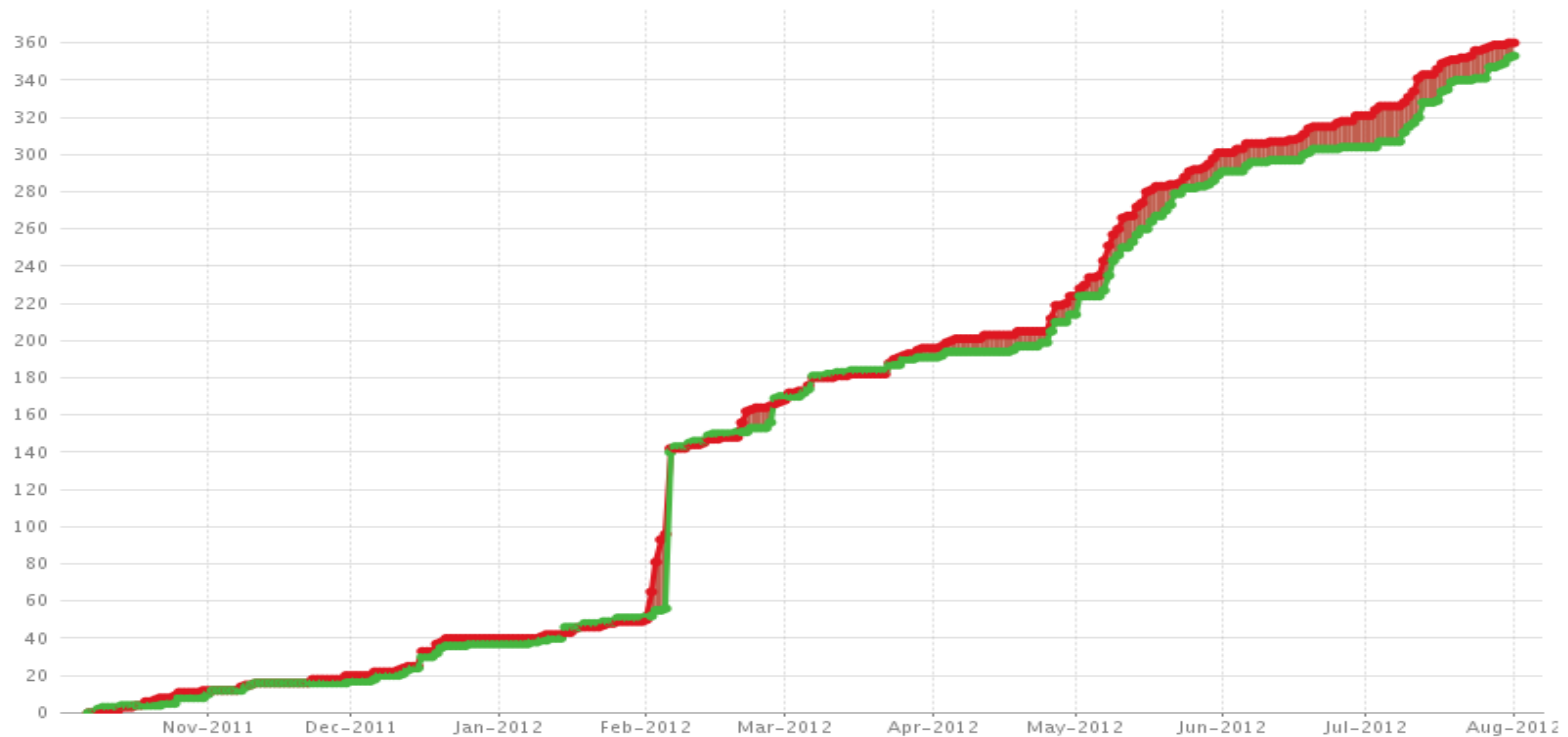


### [5.2 Tuning Applications for High Performance Networks](#)

Category: Data and Scientific Visualisation

# User Support and Training

- User helpdesk

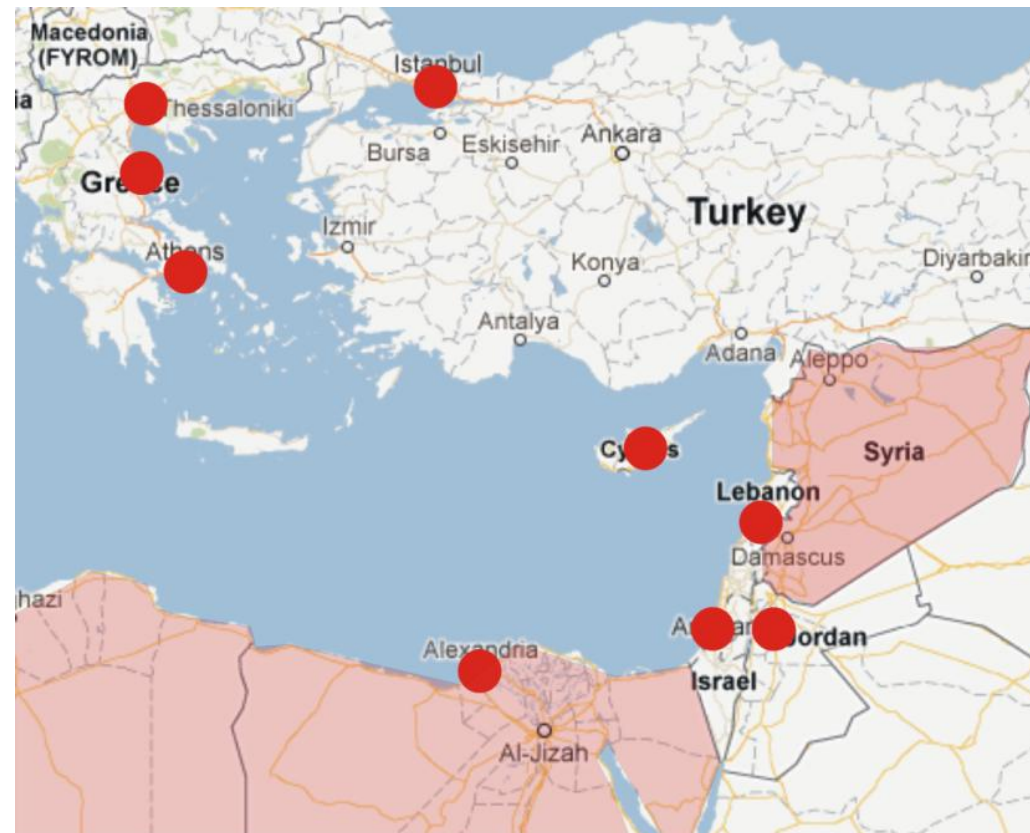


User enquiries over the last 300 days (red: requests, green: requests resolved)

# User Support and Training

- **presence in a difficult region**

- 8 one day user meetings
- 2 general User meetings (3 days)
- 2 cross sectional workshops (3 days)
- 6 thematic workshops (3 days)
- participation in numerous community events

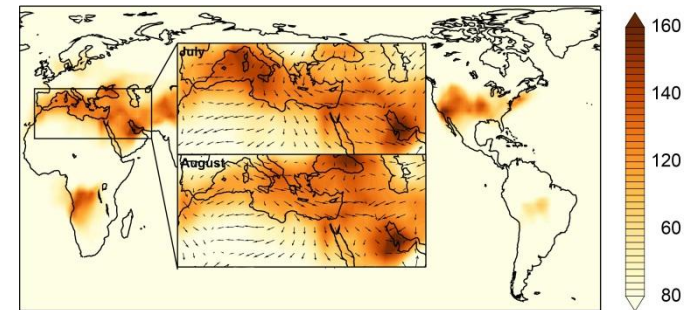


# Project Research Themes

- **Cross sectional research**
  - performance analysis and optimisation for community codes
- **Climate**
  - development of atmospheric chemistry climate models to study the Eastern Mediterranean region
- **Digital cultural heritage**
  - imaging and image processing of regional artifacts
- **Synchrotron radiation data analysis**
  - synchrotron data analysis and simulation on GPU systems



Polynomial Texture Mapping of a copy of an ancient coin from Petra, Jordan, depicting Alexander the Great or one of his successors



Mediterranean and Middle East hot spot of ozone air pollution



# Project Research Themes

## ■ Achievements during the first 2 years

- Compliance matrix for participating HPC centres (set of scientific and mathematical libraries)
- Introduction of UNICORE for workflows and access (on-going)
- Performance analysis of community codes using Scalasca
- Porting of community codes for GPU's
- Porting and optimising the global ECHAM/MESSy Atmospheric Chemistry (EMAC) climate model to the CaSToRC and BA
- Algorithmic improvements of the EMAC radiation code
- Development of data repository for Cultural Heritage and Climate studies (Medici)

# Content

- **The Cyprus Institute – Who we are**
- **HPC at The Cyprus Institute**
- **LinkSCEEM – building the community**
- **Summary**

# Summary

- **A clear need for development of a HPC user community was identified in the region**
- **LinkSCEEM projects address these needs by**
  - providing HPC resources to the region
  - training the user community
  - transferring knowledge form experienced organisations
  - initiating and supporting HPC related research of regional relevance

**Establishing a sustainable user community is a long term effort ...**

# Summary

... and LinkSCEEM helps  
to pave the way



# Join the community!

- our online material is for free and for everyone (regardless where you are)

[www.linksceem.eu](http://www.linksceem.eu)

**Linked**  **LinkSCEEM group**

# Thank you

[www.cyi.ac.cy](http://www.cyi.ac.cy)

[www.linksceem.eu](http://www.linksceem.eu)